

# **THE BLANDFORD SCHOOL**



## **SIXTH FORM OPTIONS GUIDE AND INFORMATION 2024-2026**

## Contents and Entry Requirements Summary

Page	Subject / Contents	Additional Entry Requirements	Course Leader
3	Who's Who		
4	Entry requirements		
6	Extra-Curricular Activities and Facilities		
7	The Application Process		
8	Student Voice		
<b>Level 2</b>			
9	Business	5 GCSEs passed at grade 2 or above	Mr Opalka
10	Travel and Tourism	5 GCSEs passed at grade 2 or above	Mrs Mackay
<b>Level 3</b>			
11	Art	Grade 5 in GCSE Art.	Ms Clements
13	Biology	Grade 7 in GCSE Biology / Combined Science. Grade 6 in GCSE Maths.	Mr Wort
15	Business (A Level)	Grade 5 in GCSE Business Studies, English and Maths.	Mr Opalka
16	Business (CTEC) – Single or double award.		Mr Opalka
17	Digital Media – Single award		Mr Carpenter
18	Chemistry	Grade 7 in GCSE Chemistry / Combined Science. Grade 6 in GCSE Maths.	Mrs Haymonds
20	Core Mathematics	Grade 5 in GCSE Maths.	Mrs Lee
21	Design	Grade 5 in GCSE Design or Level 2 Merit in Engineering	Mr Luxon
23	Performing Arts	Grade 5 in GCSE Drama or Merit in BTEC Dance.	Ms Clements
25	Economics	Grade 6 in GCSE English and Maths, Grade 5 in GCSE Business Studies (if taken).	Mr Opalka
26	English Language and Literature	Grade 5 in GCSE English Language and Literature.	Mr Tovey
27	Extended Project (EPQ)	5 GCSEs Grade 5 or above, including GCSE English Language	Mr J Langford
28	French	Grade 6 in GCSE French.	Mrs Cunningham
29	Geography	Grade 5 in GCSE Geography.	Mrs Muir
31	Health and Social Care (Single)	Grade 4-4 in GCSE Science.	Ms Carter
32	Health and S.C. (Diploma) (Double)	Grade 4-4 in GCSE Science	Ms Carter
33	History	Grade 5 in GCSE History (or grade 5 in English if History has not been taken.)	Mrs Traynor
35	Mathematics	Grade 7 in GCSE Mathematics.	Mrs Lee
36	Philosophy	Grade 5 in GCSE RE History (or grade 5 in English if RE has not been taken at GCSE).	Mr Harrow
37	Physical Education	Grade 5 in GCSE PE or Level 2 Merit in BTEC Sport.	Mr Young
38	Physics	Grade 7 in GCSE Physics / Combined Science. Grade 6 in GCSE Maths.	Mr Hintze
39	Psychology	Grade 5-5 in GCSE Science, Grade 5 in English and Maths.	Mrs Yeo
41	Sociology	Grade 4 in GCSE English and a Humanities subject.	Mrs Gibb
42	Spanish	Grade 6 in GCSE Spanish.	Miss Munro
43	Sport	Grade 4 in GCSE PE or Level 2 Merit in BTEC Sport.	Mr Young
44	Final word		

## Who's Who

			
Mr D Smith (Deputy Headteacher) <a href="mailto:DSmith@blandfordschool.org.uk">DSmith@blandfordschool.org.uk</a>	Mrs V Moore (Head of 6 <sup>th</sup> Form) <a href="mailto:VMoore@blandfordschool.org.uk">VMoore@blandfordschool.org.uk</a>	Mr J Langford (Head of Year 12 & EPQ) <a href="mailto:JLangford@blandfordschool.org.uk">JLangford@blandfordschool.org.uk</a>	Mrs H Rendell (Sixth Form Administrator) <a href="mailto:HRendell@blandfordschool.org.uk">HRendell@blandfordschool.org.uk</a>
			
Mr R Wort (Biology) <a href="mailto:RWort@blandfordschool.org.uk">RWort@blandfordschool.org.uk</a>	Mr R Opalka (Business and Economics) <a href="mailto:ROpalka@blandfordschool.org.uk">ROpalka@blandfordschool.org.uk</a>	Mrs Y Haymonds (Chemistry) <a href="mailto:YHaymonds@blandfordschool.org.uk">YHaymonds@blandfordschool.org.uk</a>	Mrs Z Cunningham (French) <a href="mailto:ZCunningham@blandfordschool.org.uk">ZCunningham@blandfordschool.org.uk</a>
			
Ms A Clements (Art and Performing Arts) <a href="mailto:AClements@blandfordschool.org.uk">AClements@blandfordschool.org.uk</a>	Mr D Tovey (English Language and Literature) <a href="mailto:DTovey@blandfordschool.org.uk">DTovey@blandfordschool.org.uk</a>	Mr D Luxon (Design) <a href="mailto:DLuxon@blandfordschool.org.uk">DLuxon@blandfordschool.org.uk</a>	Miss A Munro (French and Spanish) <a href="mailto:AMunro@blandfordschool.org.uk">AMunro@blandfordschool.org.uk</a>
			
Mrs H Muir (Geography) <a href="mailto:HMuir@blandfordschool.org.uk">HMuir@blandfordschool.org.uk</a>	Ms T Carter (Health and Social Care) <a href="mailto:TCarter@blandfordschool.org.uk">TCarter@blandfordschool.org.uk</a>	Mrs K Traynor (History) <a href="mailto:KTraynor@blandfordschool.org.uk">KTraynor@blandfordschool.org.uk</a>	Mrs M Lee (Maths) <a href="mailto:MLee@blandfordschool.org.uk">MLee@blandfordschool.org.uk</a>
			
Mr S Harrow (Philosophy) <a href="mailto:SHarrow@blandfordschool.org.uk">SHarrow@blandfordschool.org.uk</a>	Mr A Young (PE and Sport) <a href="mailto:AYoung@blandfordschool.org.uk">AYoung@blandfordschool.org.uk</a>	Mr H Hintze (Physics) <a href="mailto:HHintze@blandfordschool.org.uk">HHintze@blandfordschool.org.uk</a>	Mrs V Yeo (Psychology) <a href="mailto:VYeo@blandfordschool.org.uk">VYeo@blandfordschool.org.uk</a>
			
Mrs H Gibb (Sociology) <a href="mailto:HGibb@blandfordschool.org.uk">HGibb@blandfordschool.org.uk</a>	Mrs F Mackay (Travel and Tourism) <a href="mailto:FMackay@blandfordschool.org.uk">FMackay@blandfordschool.org.uk</a>	Mr R Carpenter (Digital Media) <a href="mailto:RCarpenter@blandfordschool.org.uk">RCarpenter@blandfordschool.org.uk</a>	Mr P Harrison (Sixth Form Learning Mentor) <a href="mailto:PHarrison@blandfordschool.org.uk">PHarrison@blandfordschool.org.uk</a>

## Why choose TBS Sixth Form?

The Blandford School Sixth Form is the perfect choice for students. It is big enough to offer a wide range of courses and opportunities, yet small enough to ensure that all students are known and supported as individuals to help them achieve their goals at the end of their courses. If there is a course that we do not offer that you are interested in please see Mr Smith or Mrs Moore so that we can discuss suitable alternatives.

Despite the huge disruptions to their studies over the past few years many TBS students left us to attend prestigious universities, apprenticeships and employment options. In 2023 every student who wanted to go to university was successful in gaining a place. Looking at data from the last three years; approximately three quarters of our students gained university places. From 120 leavers three students have progressed to Cambridge University, five students are studying medicine and three are studying veterinary sciences. We also have students who have gone on to study the performing arts – one studying musical theatre at Laine Theatre Arts Academy and another studying the highly competitive Theatre Management course at Guildford School of Acting at the University of Surrey. We also have high numbers on health-related courses such as midwifery, nursing, physiotherapy and speech therapy for example. Other past students chose to follow alternative progression pathways and these include Nursing Degree Apprenticeships with the NHS, Police apprenticeships, a Higher Apprenticeship with Lloyds Bank and a Degree apprenticeship with UCB (a global biopharmaceutical company).

Nationally accredited reports show that the progress students make is in the top 20% of schools nationally (state and independent). The results of our year 13 students show a three year upward trend.

On top of all of this the school offers a wide range of enrichment opportunities from supporting volunteering opportunities and work experience to Young Enterprise, Drama productions, Sports Leaders Qualifications and Sports Teams.

We look forward to welcoming you to The Blandford School Sixth Form; if you are an external applicant please do not hesitate to get in touch to discuss your application.



## General Entry Requirements

**The Blandford School offers courses at both Level 2 and Level 3.**

The entry requirement for our Level 2 programme is 5 GCSEs passed at grade 2 or above.

To access Level 3 courses you will need to have achieved a grade 4 or higher in GCSE English Language. Any students failing to meet this requirement will be required to follow a level 2 programme.

If you achieve more than 5 x grade 4s in your GCSE subjects (this may include a Level 2 Merit in a vocational subject) you will be able to choose from the level 3 programmes on offer.

If you achieve 5 x grade 4s we recommend you choose a Level 3 course made up of vocational qualifications.

If you are currently in Year 12 completing a Level 2 course you must achieve Level 2 Merits and a grade 4 in English GCSE to access the Level 3 programme and meet the subject entry requirements for Level 3 courses.

If you achieve fewer than 5 x grade 4s you will be required to follow a level 2 programme.

All A level subjects are linear; this means that you will take your exams at the end of the two year course. Vocational courses have exam entry points in January and June of year 12 and year 13 so it is likely that students will be examined throughout the two years rather than just at the end of the two year course. All Level 3 students will be expected to choose three subjects to study; these may be supplemented with Core Maths or the Extended Project Qualification (EPQ), both of which carry additional UCAS points. In exceptional circumstances you may be able to study four subjects, but only following an assessment of your suitability and a discussion with the Head of Sixth Form.

When choosing subjects you should consider: which subjects you are likely to be most successful at; the methods of assessment and if your desired progression route requires particular subjects, the websites [www.informedchoices.ac.uk](http://www.informedchoices.ac.uk), Unifrog, [The subject matters](http://www.subjectmatters.com), [the University of Cambridge](http://www.universityofcambridge.ac.uk) and UCAS are useful sources of further information.

### GCSE re-takes

Students who do not achieve a grade 4 in English Language and / or Maths at the end of Year 11 will have to re-take these subjects as part of their programme of study in order to support their future progression. Maths re-sit students may also be working towards Functional Skills Qualifications (Level 1 and Level 2) in their lessons.

*"All students who join our Sixth Form are making a positive choice in terms of their future career. Our focus is very much upon raising students' aspirations to ensure that they each achieve their full potential. Whether you aspire to a vocational training programme, or to an Oxbridge university place, we will support you along your chosen path and assist you with your decision-making and applications."*

*Vicky Moore, Head of Sixth Form.*



	Subjects Available
<b>Level 2</b> (You must study both subjects)	Business Travel and Tourism
<b>Level 3</b> (select 3 courses from...) *Indicates the subject counts as 2 courses	Art and Design Biology Business Studies Vocational Business –Single or Double(CTEC)* Digital Media (CTEC) Chemistry Design (3D Design) Economics English Language & Literature French Geography Health & Social Care (CTEC) Health and Social Care Diploma (CTEC)* History Mathematics Performing Arts Philosophy PE Physics Psychology Sociology Spanish Sport (CTEC)
<b>Enrichment Subjects</b> Chosen in addition to Level 3 courses.	Core Maths Extended Project EPQ Sports Leaders (There is a charge for this course, for eligible students this can be supported from the bursary fund.)

## Extra-Curricular and Super-Curricular Activities

We believe in enriching the curriculum as much as possible to give students the best and broadest experience and ensure that they are prepared for future progression, whatever their chosen pathway may be. We also offer a week of work experience for all year 12 students to support their progression plans. Level 2 students and Vocational students studying a Diploma may also complete an ongoing work placement for half a day or a day a week.

The possibilities of activities on offer to students are endless and if it does not already exist, we will happily help you organise it! We firmly believe that taking part in the activities we offer will enhance your future applications for universities, apprenticeships and employment. We have clubs in drama and music in addition to sporting activities. In addition to taking part in clubs sixth formers also have the opportunity to run or support clubs and activities for younger students. We take part in Young Enterprise, Rotary Young Leaders, Young Researchers and Level 3 Sports Leaders. We also take part in a wide variety of university progression programmes working most closely with: University of Exeter; Bournemouth University; University of Bath; University of Southampton; Bournemouth Arts University; University of Oxford and the University of Cambridge. Finally, the annual school production always receives amazing reviews with our Sixth Formers taking the lead in challenging roles. We also have a close link with the YMCA and fundraise for the homeless of Dorset, Poole and Bournemouth by sleeping 'rough' for one night each year.



## Facilities

The Blandford School Sixth Form has its own dedicated area along with the excellent facilities available to the rest of the school. This includes:

- Dedicated independent study area supervised by the Sixth Form Learning Mentor and teaching staff
- Sixth Form computer room
- Sixth Form laptops available to borrow
- The Well – an additional independent study and social space
- Close proximity to the school's library
- Access to a Careers advisor

There are also several Faculty Study areas for Sixth Form students to use in their non-contact periods, equipped with suitable resources to aid their learning.

Sixth Form students also have access to the Bursary Fund to support the costs associated with learning. For further details regarding the fund please contact the Sixth Form office or the school website. Whilst we do everything we can to support students both academically and pastorally it may be required that students buy their own text books.

## Scholarships

We offer a small number of financial scholarships to students who join our Sixth Form. Applications are via our website and will open on **27<sup>th</sup> November 2023** and close on **12<sup>th</sup> December 2023**. Interviews will take place in January.

Students may apply for up to two types of scholarship but will only be able to hold one. Scholarships are available in the following disciplines: academic, sport and performing arts.

### Application Process and Timeline – Internal Applicants

**Step 1** Attend Sixth Form Open Evening on **Thursday 23<sup>rd</sup> November 2023**. You will be able to discuss your options for next year with subject teachers and the Sixth Form Team.

**Step 2** Find out which level of course would be most appropriate to you (Level 2 or Level 3); and read the information sheets in this booklet about all the courses.

**Step 3** Discuss your choices with your current teachers

**Step 4** Complete **Options Form Version 1** and return to the main office by **Monday 4<sup>th</sup> December 2023**.

*Following analysis of students' choices and preferences, there may be a second version of the Option Blocks.*

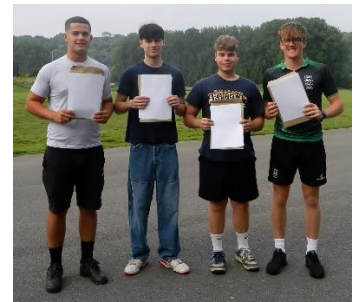
**Step 5** Attend a **progression meeting** with Senior Staff after Christmas; you will have the opportunity to discuss your plans for next year and ask any questions. We will also check your suitability for your chosen courses.

**Step 6** Decide whether a programme in our Sixth Form is your first choice (Plan A) and/or if it is going to be your back-up (Plan B).

**Step 7** Complete your final **Application Form** and return it to school (**Date to be confirmed - around February half term**). *If you are intending to go somewhere else for your post-16 study, please complete this form to tell us where you are going.*

**Step 8** Discuss your final application with subject staff; you may also be invited to attend an interview with Mrs Moore, Head of Sixth Form.

**Step 9** Attend Step Up to Sixth Form day (**Monday 24<sup>th</sup> June 2024**) to support your transition between GCSE and Sixth Form courses.



### Application Process and Timeline – External Applicants

**Step 1** Attend the Sixth Form Open Evening on **Thursday 23<sup>rd</sup> November 2023**. Discuss your options with subject staff.

**Step 2** Find out which level of course would be most appropriate to you (Level 2 or Level 3) and read the information sheet in this booklet about all the courses.

**Step 3** Complete **Options Form Version 1** and return to Mrs Rendell (hrendell@blandfordschool.org.uk) by **Monday 4<sup>th</sup> December 2023**.

*Following analysis of students' choices and preferences, there may be a 2nd version of the Option Blocks.*

**Step 4** Attend an **interview** with Mrs Moore or Mr Langford after Christmas; you will have the opportunity to discuss your plans for next year and ask any questions. We will also check your suitability for your chosen courses with your current school.

**Step 5** On GCSE results day email us with your grades.

**Step 6** Attend Step Up to Sixth Form day (Monday 24<sup>th</sup> June 2024) to support your transition between GCSE and Sixth Form courses.

## Student Voice



Our Head Students.

“The Sixth Form team are incredibly helpful and supportive, particularly with challenging tasks such as University applications”

“I really enjoy having non-contact periods as it allows me to relax and catch up with my school work.”

“The Sixth Form teachers are excellent. They are always happy to help with questions about subject content or advice for studying and future plans. They really push you to reach your full potential.”

“I really like having smaller classes so the teachers can help you more and you can build better relationships with your peers.”



## Cambridge Technicals Diploma in Business (Level 2)

<b>Subject Leader</b>	Mr R Opalka	<b>Exam board</b>	OCR	<b>Specification Link</b>	<a href="http://www.ocr.org.uk/qualifications/by-type/cambridge-technicals/cambridge-technicals-2012/">http://www.ocr.org.uk/qualifications/by-type/cambridge-technicals/cambridge-technicals-2012/</a>
-----------------------	-------------	-------------------	-----	---------------------------	---

### Why choose CTEC Business.

Business is a very popular choice in the UK as a level 2 vocational course. Many of the concepts and issues that are dealt with in the course are ones that you will face in the world outside of education, helping to prepare you for the world of work. The skills that you will develop through this course are highly sought after by both employers and universities. You will not only develop your knowledge of the business world but your analytical and decision-making skills will be greatly enhanced through your work. The course is an excellent choice to either give you a head start in the career that you choose to go into or as a stepping stone into CTEC Level 3s or further education.



### What you will study in CTEC Business.

You will study a range of units including:

- Business organisations
- Marketing
- Business online
- People in organisations
- Business ethics

### How you will be assessed in CTEC Business.

You will take ten units over the year, two of which are double units. All of the units are currently assessed through coursework. However, new level 2 courses are being introduced and we are looking at the suitability of other courses that may include an externally examined element.



### Progression and Careers linked to CTEC Business.

Progression on to level 3 courses  
Further education courses requiring a level 2 qualification  
Running your own business  
Human resources  
Marketing  
Operations management

### Additional Information.

For any further questions, please contact Mr Opalka.

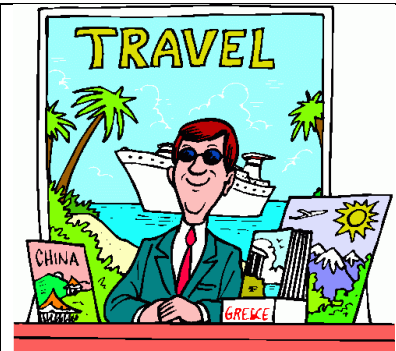


## **BTEC First Award in Travel and Tourism (Level 2)**

<b>Subject Leader</b>	Mrs F MacKay	<b>Exam board</b>	Edexcel	<b>Specification Link</b>	<a href="http://qualifications.pearson.com/en/qualifications/btec-firsts/travel-and-tourism-2013-nqf.html">http://qualifications.pearson.com/en/qualifications/btec-firsts/travel-and-tourism-2013-nqf.html</a>
-----------------------	--------------	-------------------	---------	---------------------------	---

### **Why choose BTEC First Award in Travel and Tourism.**

BTEC Firsts in Travel and Tourism are a stepping stone towards a career in retail, business travel and other areas of the leisure and tourism sector. We cover important skills including business awareness and customer service and gain an understanding of destinations and travel routes in the UK and worldwide. Tourism is one of the major industries in Dorset and provides numerous employment opportunities.



### **What you will study in BTEC First Award in Travel and Tourism.**

We learn about key destinations in the UK and around the world, their locations and the routes between them. We cover air, rail, road and sea transport, how to plan for trips and holidays and match tourism experiences to customers' needs and requirements. We also find out how the industry has developed since people first started to have paid leave back in 1871.

### **How you will be assessed in BTEC First Award in Travel and Tourism.**

Over this one year course you will study four units of which one is an hour long examination taken in January and the remaining three consist of teacher assessed coursework units.



### **Progression and Careers linked to BTEC First Award in Travel and Tourism.**

Retail, business and other areas of the travel, leisure and tourism spheres. The course will also enhance your communication skills and ICT skills.

## A Level Art

<b>Subject Teachers</b>	Mrs Amey and Ms Clark	<b>Exam board</b>	AQA	<b>Specification Link</b>	<a href="http://www.aqa.org.uk/subjects/art-and-design/as-and-a-level/art-and-design">http://www.aqa.org.uk/subjects/art-and-design/as-and-a-level/art-and-design</a>
-------------------------	-----------------------	-------------------	-----	---------------------------	---

### Entry Requirements.

Grade 5 in GCSE Art

Students wishing to follow this course without having followed a GCSE in Art will be required to submit a portfolio of work and be interviewed by Mrs Amey and Ms Clark.

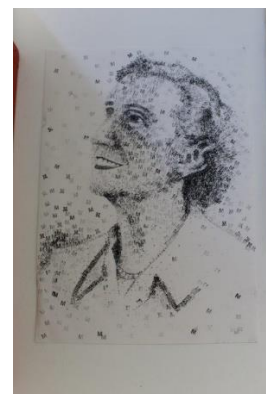
Summer holiday work is required for September as it is the start to the first set project

### Why choose A Level Art.

The aim of this course is to encourage students to develop:

- Intellectual, imaginative and creative skills.
- Investigations and analysis of their aesthetic understanding and critical judgement.
- Independence, refining and communicating their own ideas, their own intentions and their own personal outcomes.
- A passion and enjoyment of art, craft and design.
- The experience of working with a broad range of media.
- Knowledge and experience of real-world contexts and, where appropriate, links to the creative industries.
- Knowledge about art, craft, design, photography and technology in contemporary and past societies and cultures.

Creativity is the next buzzword. It is the third skill on the list that employers are looking for in 2022. Every good company realises that creativity and good design are important factors in generating new business. So, your creativity isn't just a way of satisfying your artistic desire, it can open a door to exciting career opportunities as well.



### What you will study in A Level Art.

Following an induction period of experimentation, students will then start on a Personal Investigation. Students are required to conduct a practical investigation, into an idea, issue, concept or theme, supported by written material. The focus of the investigation must be identified independently by the student and must lead to a finished outcome. The investigation must be informed by an aspect of contemporary or past practice of artists, photographers, designers or craftspeople. The written material must confirm understanding of creative decisions, providing evidence of all four assessment objectives.

### How you will be assessed in A Level Art.

Component 1:

Personal investigation

- No time limit
- 96 marks
- 60% of A-level - non-examined assessment (NEA) set and marked by the centre, moderated by AQA

### Component 2:

- Preparatory period + 15 hours supervised time
- 96 marks
- 40% of A-level - non-examined assessment (NEA) set by AQA, marked by the centre, moderated by AQA



### Progression and Careers linked to Art.

- Architect
- Art therapist
- Exhibition designer
- Fashion designer
- Film maker
- Fine artist
- Games designer
- Garden designer
- Glass blower
- Illustrator
- Interior designer
- Model maker
- Multimedia programmer
- Museum/gallery curator
- Photographer
- Printmaker
- Prosthetic maker
- Sculptor
- Set design
- Stylist
- Teacher
- Textile design



### Additional Information.

For further information, talk to Mrs Amey, Ms Clark or any of the post 16 Art students. There is a Studio Charge of £20.00 each year to contribute towards the cost of materials but this may not cover the cost of all materials used in your personal investigations. Eligible students will be able to apply to the 16-19 Bursary Fund for support with costs.

“Art washes away from the soul the dust of everyday life.”  
**Pablo Picasso**

*All art work on these pages is produced by TBS A Level Art students*

# A Level Biology

<b>Subject Leader</b>	Mr R Wort	<b>Exam board</b>	AQA	<b>Specification Link</b>	<a href="http://www.aqa.org.uk/subjects/science/as-and-a-level/biology-7401-7402">http://www.aqa.org.uk/subjects/science/as-and-a-level/biology-7401-7402</a>
-----------------------	-----------	-------------------	-----	---------------------------	---

## **Entry Requirements.**

Grade 7 in GCSE Biology or 7-7 in GCSE combined Science, plus a 6 in GCSE Maths.

## **Why choose A Level Biology.**

Biology is the Science of Life; it involves the study of a wide range of exciting topics, ranging from molecular biology to the study of ecosystems and from microorganisms to mammals.

Biology is one of the most popular A Level subjects in the country, attracting students studying a wide range of other subjects. Many of these students enjoy the subject so much they eventually choose a biologically related degree course. Others go on to careers in law, computing, accounting or teaching. So, whatever field you will eventually work in, you will find Biology a very rewarding and challenging course which will develop many of the skills essential for a successful career.



## **What you will study in A Level Biology.**

In year 12 the following topics are covered: biological molecules, cells, how organisms exchange substances with their environment and genetic information, variation and relationships. These topics provide the foundation for understanding biology and then in year 13 students will be required to apply that knowledge in the topic areas of; energy transfers, organism response to environment, evolution, ecosystems and the control of gene expression. The course is taught as a blend of theory work and practical work, including 12 AQA required practical tasks.

## **How you will be assessed in A Level Biology.**

The A-level course is assessed by three 2hr papers, which incorporate assessment of practical techniques and include a mix of short and longer answer questions.

*“Intelligence is based on how efficient a species became at doing the things they need to survive.”*

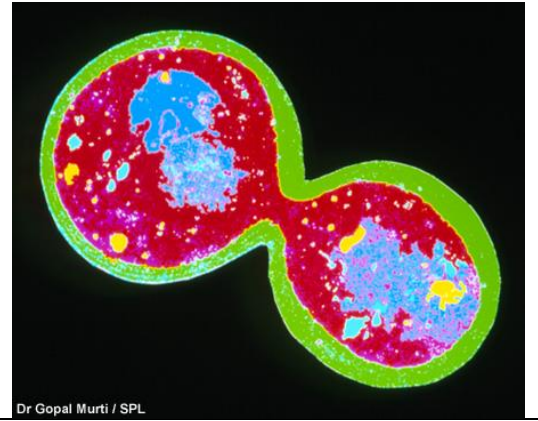
Charles Darwin

## **Progression and Careers linked to Biology.**

Studying biology teaches us to ask questions, make observations, evaluate evidence, and solve problems. Biologists learn how living things work, how they interact with one another, and how they evolve. They may study the evolution, natural history, and conservation of plants and animals; investigate the interactions of living organisms with light, the environment, or each other; or have careers in pharmaceuticals, biotechnology, or medical research. Their work increases our understanding about the natural world in which we live and helps us address issues of personal well being and worldwide concern, such as environmental degradation, threats to human health, and maintaining viable and abundant food supplies.

**Additional Information.**

A-level Biology is a demanding and academic course and is suitable for students who have an interest in the subject and are willing to work hard throughout the two year course. Biology is a very highly regarded A level by universities and, as a facilitating subject is a useful for numerous university degrees.



# A Level Business

<b>Subject Leader</b>	Mr R Opalka	<b>Exam board</b>	Edexcel	<b>Specification Link</b>	<a href="https://qualifications.pearson.com/en/qualifications/edexcel-a-levels/business-2015.html">https://qualifications.pearson.com/en/qualifications/edexcel-a-levels/business-2015.html</a>
-----------------------	-------------	-------------------	---------	---------------------------	---

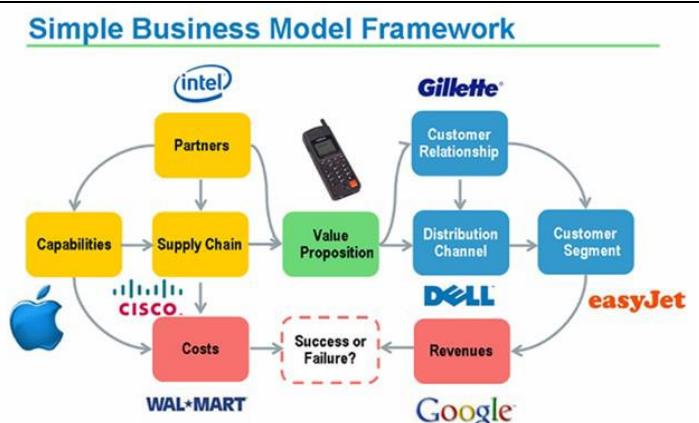
## Entry Requirements.

Grade 5 in GCSE English & Maths, Grade 5 in Business Studies if taken.

## Why choose A Level Business.

Business is one of the most popular choices in the UK at both A level and degree level. Many of the concepts and issues that are dealt with in the course are ones that you will face in the world outside of education.

The business world is constantly changing and the course reflects this through the examination of modern, cutting-edge theories that the most successful firms are employing today.



## What you will study in A Level Business.

- Gain a holistic understanding of business in a range of contexts.
- Develop a critical understanding of organisations and their ability to meet society's needs and wants.
- Understand that business behaviour can be studied from a range of perspectives.
- Generate enterprising and creative approaches to business opportunities, problems and issues.
- Be aware of the ethical dilemmas and responsibilities faced by organisations and individuals.
- Acquire a range of relevant business and generic skills, including decision making, problem solving, the challenging of assumptions and critical analysis.
- Apply numerical skills in a range of business contexts.

## How you will be assessed in A Level Business.

Paper 1: Marketing, people and global businesses – 2 Hour Written Exam (35%)

Paper 2: Business activities, decisions and strategy – 2 Hour Written Exam (35%)

Paper 3: Investigating business in a competitive environment – 2 Hour Written Exam (30%)

All exams are taken at the end of Year 13.



## Progression and Careers linked to Business.

Running your own business & entrepreneurship  
 Accountancy  
 Human Resources  
 Marketing  
 Operations management  
 Business Law  
 Leadership and management

## Additional Information.

For any further questions, please contact.

[ropalka@blandfordschool.org.uk](mailto:ropalka@blandfordschool.org.uk)

Alternatively feel free to speak to any of the Business Studies teachers in school.



# Cambridge Technicals Extended Certificate or Diploma in Business (Level 3)

<b>Subject Leader</b>	Mr R Opalka	<b>Exam board</b>	OCR	<b>Specification Link</b>	<a href="http://www.ocr.org.uk/qualifications/vocational-education-and-skills/cambridge-technicals-business-level-3-certificate-extended-certificate-foundation-diploma-diploma-05834-05837-2016-suite/">http://www.ocr.org.uk/qualifications/vocational-education-and-skills/cambridge-technicals-business-level-3-certificate-extended-certificate-foundation-diploma-diploma-05834-05837-2016-suite/</a>
-----------------------	-------------	-------------------	-----	---------------------------	---

## Why choose CTEC Business.

Business is one of the most popular choices in the UK as a level 3 vocational course. Many of the concepts and issues that are dealt with in the course are ones that you will face in the world outside of education, helping to prepare you for the world of work.

The business world is constantly changing and the course reflects this through the variety of units offered.

**This course is offered as either a single (Extended Certificate) or double award (Diploma). To select it as a single award you need to pick it in one option block, as a double in two. (Please refer to the options sheet to determine which block(s) to select.**



## What you will study in CTEC Business.

You will study a range of units including:

- The business environment
- Marketing and market research
- Business events
- Working in Business
- Change management

## How you will be assessed in CTEC Business.

**Double Award:**

You will take ten units over the two years, two of which are double units.

Of these ten units four are assessed through an external exam and the other six are assessed through coursework.

**Single Award:**

You will take five units over the two years, one of which is a double unit, two of these five units are assessed through an external exam and the others via coursework.



## Progression and Careers linked to CTEC Business.

Running your own business & entrepreneurship

Accountancy

Human Resources

Marketing

Operations management

Business Law

Leadership and management

## Additional Information

For any further questions, please contact Mr Opalka

([ropalka@blandfordschool.org.uk](mailto:ropalka@blandfordschool.org.uk))

Alternatively feel free to speak to any of the Business Studies teachers in school.



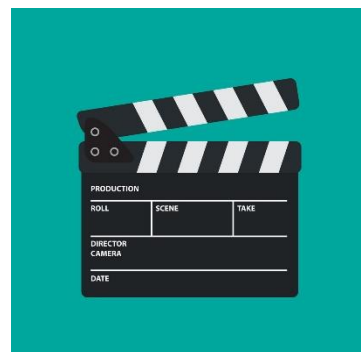


# Cambridge Technicals Extended Certificate in Digital Media (Level 3)

<b>Subject Leader</b>	Mr R Carpenter	<b>Exam board</b>	OCR	<b>Specification Link</b>	<a href="https://www.ocr.org.uk/qualifications/cambridge-technical/digital-media/units/#level-3">https://www.ocr.org.uk/qualifications/cambridge-technical/digital-media/units/#level-3</a>
-----------------------	----------------	-------------------	-----	---------------------------	---

## Why choose Creative i-Media

Media is all around us, we consume and are influenced by it every day. On the course you will look at a range of different media sectors ranging from TV and film to social media and radio. You will develop an understanding of how different media institutions operate to create products that appeal to specific target audiences. You will gain knowledge and understanding of the pre-production, planning and production processes and go on to create a media product. Through this, you will also develop transferable skills such as planning, communication, adaptability and leadership.



## What you will study in Creative Media

You will study a range of units including:

- Media Products and audiences
- Pre-Production and planning
- Creating a media product
- Social Media and globalisation
- Journalism and the news industry

## How you will be assessed in CTEC Digital Media.

The course consists of 5 units studied over the course of two years. Two units are externally assessed by an exam, the other three are coursework based. An assignment will be set for each unit and these will be assessed internally and moderated externally.



## Progression and Careers linked to CTEC Media.

On completion of the course students could go on to study a degree in film & tv, radio, journalism, social media and digital marketing.

## Additional Information.

For any further questions, please contact Mr Carpenter.



# A Level Chemistry

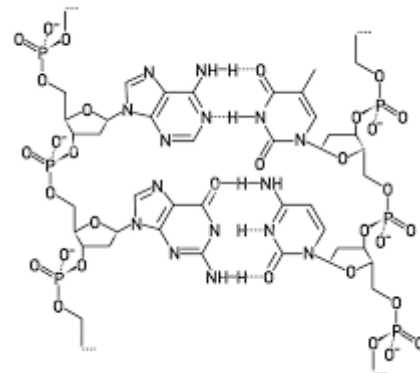
<b>Subject Leader</b>	Mrs Y Haymonds	<b>Exam board</b>	AQA	<b>Specification Link</b>	<a href="http://www.aqa.org.uk/subjects/science/as-and-a-level/chemistry-7404-7405">http://www.aqa.org.uk/subjects/science/as-and-a-level/chemistry-7404-7405</a>
-----------------------	----------------	-------------------	-----	---------------------------	---

## Entry Requirements.

Grade 7 in GCSE Chemistry or 7-7 in GCSE combined Science, plus a 6 in GCSE Maths.

## Why choose A Level Chemistry.

Chemistry is an exciting, highly rewarding and versatile A-level, which helps explain the world around us. A-level Chemistry helps you understand the manufacturing process of many products you use, as well as looking in more detail at the smaller things in life, such as the nature of atoms and bonds. The chance to discover a new drug to fight a disease, or the opportunity to develop a new material that will have worldwide usage are just two things that people with a background in Chemistry could achieve in the future.



## What you will study in A Level Chemistry.

The three key areas of Chemistry are all studied: Organic Chemistry (the study of molecules and reactions containing carbon), Inorganic Chemistry (the study of molecules and reactions not involving carbon) and Physical Chemistry (the study of kinetics and energy changes in reactions). The course is highly mathematical, in particular, Physical Chemistry. Although very useful, you do not need to take Maths A level to succeed at Chemistry. However, a mathematical aptitude and confidence with the subject are essential. The course is taught as a blend of theory work and practical work, which helps reinforce concepts and gives you the chance to apply your knowledge.

## How you will be assessed in A Level Chemistry.

The A level course is assessed by three 2 hour papers, which incorporate assessment of practical techniques and include a mix of short and longer answer questions.

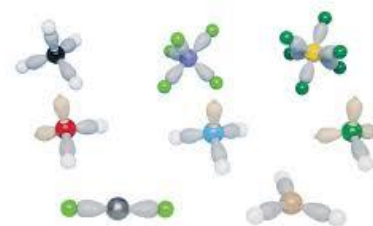


## Progression and Careers linked to Chemistry.

Chemistry provides an excellent foundation for any career in Science or otherwise, as it demonstrates a mix of ability to both learn and apply knowledge. For example, it could support careers in Nuclear Science, criminology, photography, scientific journalism, marine chemistry, cosmetic science, patent or chemical law, materials science, nanotechnology, quality control chemistry, geology, pharmaceuticals, medicine, pathology and many more. It is essential for you to study Chemistry A Level if you wish to study medicine via the traditional route.

**Additional Information.**

A level Chemistry is a demanding and highly academic course and is only suitable for students who have a true passion for the subject and have the required abilities. Chemistry is a very highly regarded A level by universities and is a preferred subject for numerous university degrees.



## CORE Mathematics

<b>Subject Leader</b>	Mrs M Lee	<b>Exam board</b>	OCR / MEI	<b>Specification Link</b>	<a href="https://www.ocr.org.uk/qualifications/core-maths/b-mei-level-3-certificate-h869/">https://www.ocr.org.uk/qualifications/core-maths/b-mei-level-3-certificate-h869/</a>
-----------------------	-----------	-------------------	-----------	---------------------------	---

### Entry Requirements

This course is suited for students who have achieved a grade 5 or higher in GCSE Maths, who do not wish to or do not meet the requirements to study the subject at A-Level, but who do wish to continue to improve their mathematics.

### Why chose Core Mathematics.

#### The purposes of this qualification are to:

- Consolidate and extend on mathematical understanding learnt at GCSE, develop further mathematical understanding and transferable skills in the application of mathematics to authentic problems.
- Build a broader base of mathematical understanding and skills in order to support the mathematical content in other Level 3 qualifications, for example A Level Biology, Business Studies, Economics, Geography, Psychology, Business, and Health and Social Care.
- Provide evidence of achievements against demanding and fulfilling content, to give the confidence that the mathematical skills, knowledge and understanding they will acquire during the study of the of course are as good as that of the highest-performing countries in the world.

#### Qualification aims and objectives:

- Develop competence in the selection and use of mathematical methods and techniques.
- Develop confidence in representing and analysing authentic situations mathematically, and in applying mathematics to address related questions and issues.
- Build skills in mathematical thinking, reasoning and communication.



### What you will study in Core Mathematics.

- |  |   |
|--|---|
| <ul style="list-style-type: none"> <li>• Modelling</li> <li>• Statistics</li> <li>• Finance</li> <li>• Working with exponentials</li> <li>• Working with graphs and gradients</li> </ul> | <ul style="list-style-type: none"> <li>• Geometry and measures</li> <li>• Risk</li> <li>• Statistical problem solving</li> <li>• Use of technology</li> </ul> |
|--|---|

### How you will be assessed in Core Mathematics.

The OCR / MEI B qualification consists of 2 equally weighted 2-hour long papers: Introduction to quantitative reasoning and Statistical problem solving. Students will complete both papers at the end of Year 12 of this one-year course. The qualification is equivalent to an AS level and graded and certificated on a five-grade scale from A to E.

### Progression and Careers linked to Core Mathematics.

The course content is specifically chosen for its relevance to a wide range of future studies and employment. The themes are relevant to adult-life and questions interrogate scenarios mathematically to help embed learning for future education or career paths. An increasing number of Universities are lowering their entry requirements for students who successfully studied Core Maths.

# A Level 3D Design

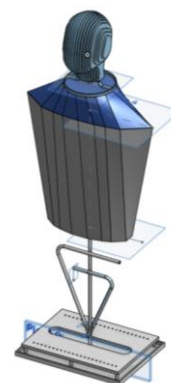
<b>Subject Leader</b>	Mr D Luxon	<b>Exam board</b>	AQA	<b>Specification Link</b>	<a href="https://www.aqa.org.uk/subjects/art-and-design/as-and-a-level/art-and-design-7201/specification-at-a-glance">https://www.aqa.org.uk/subjects/art-and-design/as-and-a-level/art-and-design-7201/specification-at-a-glance</a>
-----------------------	------------	-------------------	-----	---------------------------	---

## Entry Requirements

Grade 5 in GCSE Product Design or Level 2 Merit in Engineering.

## Why choose A Level 3D Design.

Three-dimensional design is about looking, learning, thinking and communicating ideas. It inspires creative thinkers, problem solvers and people who enjoy making. Three-dimensional design is the ideal opportunity to explore ideas and develop skills and is a great first step for those who wish to follow a course in art and design at university. However, its balance of practical, academic and analytical skills are widely transferable and students intending to study courses unrelated to art and design find that it complements their other subject choices. A course in three-dimensional design will enable you to select appropriate materials and learn how they fit together, develop an understanding of scale and experiment with texture and surface finish.



## What you will study in A Level 3D Design.

**Project one: Year 12** 6 to 8 weeks (approx.) are used for introducing basic skills, the formal elements and introducing the specification requirements including presentation of work and making connections with the work of others.

**Project two Year: 12** 14 to 16 weeks (approx.) are used to enable students to develop a personal project, which covers the requirements of Component 1 on a smaller scale. Full coverage of the assessment objectives and the conclusion with a resolved outcome, referencing the work of others is considered. Although ideas may springboard from this project or the weeks of mini skills building workshops.

**Project three: Year 12 and Year 13 Component 1** 16 to 24 weeks (approx.)

- Component 1 is a sustained and focused investigation in response to an issue, theme or idea identified and chosen by the student.
- It is a practical body of work, which is supported by written material of between 1000 and 3000 words. (Annotations and notes do not form part of the word count.)
- Work submitted for assessment must evidence coverage of all four assessment objectives, which are marked holistically.
- The personal investigation will be assessed as a whole. Evidence of meeting the requirements of all the assessment objectives must be evident in the written and practical work.
- There should be clear development of ideas and techniques based upon the students' intentions.
- Component 1 is not a portfolio and should not contain additional material or projects that are not related to the student's personal investigation.
- Presentation of work can be physical or digital sketchbooks, boards, models or a combination of all these approaches.

**Project four: Year 13 Component 2** 10 to 12 weeks (approx.)

- Component 2, The externally set assignment (ESA) provides students with the opportunity to demonstrate their ability to develop and explore ideas relevant to an externally set starting point.
- Students are required to realise their intentions in an outcome or series of outcomes during the period of supervised time.
- Only work produced during the period of preparatory study and within the 15 hours of supervised time may be submitted for assessment.
- Work produced during the preparatory period and the 15 hours of supervised time, will be marked holistically.

## How you will be assessed in A Level 3D Design.

### A-level overview

<b>Component 1: Personal investigation</b>	+	<b>Component 2: Externally set assignment</b>
<b>What's assessed</b>		<b>What's assessed</b>
Personal investigation: 7201/C, 7202/C, 7203/C, 7204/C, 7205/C, 7206/C		Response to an externally set assignment: 7201/X, 7202/X, 7203/X, 7204/X, 7205/X, 726/X
<b>Assessed</b>		<b>Assessed</b>
No time limit 96 marks 60% of A-level		Preparatory period + 15 hours supervised time 96 marks 40% of A-level
Non-exam assessment (NEA) set and marked by the centre and moderated by AQA during a visit to the centre. Visits will normally take place in June.		Non-exam assessment (NEA) set by AQA, marked by the centre and moderated by AQA during a visit to the centre. Visits will normally take place in June.



## Progression and Careers linked to 3D Design.

- Architecture • Model making • Ceramics • Product design • Film and TV set design • Set design
- Interior design • Sculpture • Jewellery design • Theatre set design • Landscape architecture

## Additional Information

Please do not hesitate to contact me at The Blandford School if you require further information [DLuxon@blandfordschool.org.uk](mailto:DLuxon@blandfordschool.org.uk)  
 Further information on the course can be found at:  
<https://www.aqa.org.uk/subjects/art-and-design/as-and-a-level/art-and-design-7201>



# BTEC Extended Certificate/Foundation Diploma in Performing Arts

<b>Subject Leader</b>	Miss Clements	<b>Exam board</b>	Edexcel	<b>Specification Link</b>	<a href="https://qualifications.pearson.com/en/qualifications/btec-nationals/performing-arts-2016.html#%2Ftab-Foundation-Diploma_3">https://qualifications.pearson.com/en/qualifications/btec-nationals/performing-arts-2016.html#%2Ftab-Foundation-Diploma_3</a>
-----------------------	---------------	-------------------	---------	---------------------------	---

## Entry Requirements.

Grade 5 in GCSE Drama or Merit in BTEC Dance. Experience in extra-curricular performance or production is an advantage. Students without GCSE Drama or BTEC Dance will be considered in exceptional circumstances.

## Why choose BTEC Performing Arts?

Do you enjoy performance and theatre? Are you creative? Do you enjoy active, practical learning? A BTEC in Performing Arts is a practical experience that prepares you for further study and a career in the industry. Through a range of specialised units you will learn about the world of theatre and performance and will develop performance skills in the disciplines of Acting, Dance and Musical Theatre. For suitable candidates it may be possible to achieve a Foundation Diploma equivalent to 1.5 A Levels.

- **Inspires and develops creativity, confidence** and communication skills.
- We have developed AS and A level Drama and Theatre qualifications for 2016 that encourage creativity, focus on practical work and develop skills that will support progression to further study of drama and a wide range of other subjects.
- **A practical focus is at the heart**
- Our carefully selected Set texts will inspire teachers and students and avoid the most popular performance texts. You get to choose performance texts that best suit your students, their ability to access the work, their interests and their skills.
- **Clear and straightforward assessments**
- Study influential practitioners in Acting/Dance.
- Specialist units to develop expertise in preferred discipline.
- Arts in the Community project
- Opportunities to participate in a range of performances.
- Opportunities to attend a range of live theatre productions.
- Participate in a range of workshops led by professionals working in the industry.
- Broaden your skill set in performance disciplines.
- Audition technique and support for HE applications
- Question papers will be accessible for students and the mark schemes will make the required standard clear.
- **Supports progression and develops transferable skills**
- With similar approaches to assessment at GCSE and A level, students will have a coherent experience of drama, developing valuable skills that support a smooth transition to the next level of study.
- Students will have the opportunity to explore practitioners and performance texts from this century.



## What you will study in BTEC Performing Arts?

### Unit 1: Investigating Practitioner's Work

Learners investigate the work of performing arts practitioners and develop critical analysis skills and contextual understanding of how practitioners communicate themes in their work.

### Unit 2: Developing Skills and Techniques for Live Performance

Learners explore technical performance skills with a focus on developing skills and techniques in at least two performance styles..

**Unit 3: Group Performance Workshop**

Learners explore and integrate creative, physical and vocal skills and techniques, working collaboratively to create a performance in response to a given stimulus.

**Unit 4: Performing Arts in the Community**

Learners develop their knowledge and understanding of performing in the community, applying specialist skills and techniques to a community performance project.

**Dance Pathway – specialist units:**

**Contemporary/Street Dance Technique:**

Learners develop their knowledge, skills and techniques with an emphasis on practical development, application and performance skills.

**Choreography**

Learners develop their knowledge, skills and techniques in choreography through practical exploration, workshops and performance.

**Acting Pathway – specialist units:**

**Acting Styles:**

Learners develop acting methods by exploring different acting styles. They will apply techniques to the development, rehearsal and performance of their practical work.

**Storytelling:**

Learners explore traditional stories and develop techniques in performing existing written pieces to a target audience.

**How you will be assessed in BTEC Performing Arts**

**Externally-assessed units: UNIT 1 and UNIT 3** All of the units developed for external assessment are of 90 GLH to allow learners to demonstrate breadth and depth of achievement. Each assessment is taken under specified conditions, then marked by Pearson and a grade awarded. Learners are permitted to resit external assessments during their programme. The styles of external assessment used for qualifications in the performing arts suite are:

- set tasks – learners take the assessment during a defined window and demonstrate understanding through completion of a vocational task performance –
- learners prepare for assessment over an extended window and demonstrate skills that generate some non-written evidence.

**Internally Assessed units:** All other units are assessed using a variety of styles to help learners develop a broad range of transferable skills. Learners could be given opportunities to:

- write up the findings of their own research
- use case studies to explore complex or unfamiliar situations
- carry out projects for which they have choice over the direction and outcomes
- demonstrate practical and technical skills using appropriate techniques and processes.



**Progression and Careers linked to Performing Arts.**

Teaching (Primary/Secondary) Marketing Drama Therapy Arts Administration Directing Theatre Critic	Media/Journalism Acting Musical Theatre Lighting Design Sound Design Dancer Choreographer	Stage Management Costume Design Theatrical Make-Up Set Design Play Writing
--	---	--

**Additional Information.**

Contact Miss A Clements for further information :  
AClements@blandfordschool.org.uk



# A Level Economics

<b>Subject Leader</b>	Mr R Opalka	<b>Exam board</b>	Edexcel	<b>Specification Link</b>	<a href="https://qualifications.pearson.com/en/qualifications/edexcel-a-levels/economics-a-2015.html">https://qualifications.pearson.com/en/qualifications/edexcel-a-levels/economics-a-2015.html</a>
-----------------------	-------------	-------------------	---------	---------------------------	---

## Entry Requirements

Grade 6 in GCSE English & Maths, Grade 5 in Business Studies if taken.

## Why choose A Level Economics.

Economics is a fascinating subject to study, as it helps you to look more deeply into the world around you – how and why it functions as it does. It can also give you new perspectives on some of the most pressing and challenging problems facing the world today, such as the Covid crisis. Economics does not revolve solely around wealth creation, or peaks and troughs in financial money markets and their effects on business performance. Economic decisions and activities impact on many different areas of society and on our own everyday lives – interest rate fluctuations, personal taxation, unemployment, labour force migration and football transfer prices, to name but a few. In a world where there is increasing debate about scarcity of resources, economics plays a key role in that it is fundamentally concerned with how to allocate those resources most efficiently.



## What you will study in A Level Economics.

- A holistic understanding of economics in a range of contexts.
- Develop a deeper understanding of our national economy and its place in the global economy.
- Understand that business behaviour can be studied from a range of perspectives.
- Understand the role of government in our everyday lives.
- Acquire a range of relevant economic and generic skills, including decision making, problem solving, the challenging of assumptions and critical analysis.
- Apply numerical skills in a range of economic contexts.

## How you will be assessed in A Level Economics.

Paper 1: Markets and business behaviour – 2 Hour Written Exam (35%)

Paper 2: The national and global economy – 2 Hour Written Exam (35%)

Paper 3: Microeconomics and macroeconomics – 2 Hour Written Exam (30%)

All exams taken at the end of Year 13.

## Progression and Careers linked to Economics.

Finance

Accountancy

Economic development

Politics/Civil service

Business Law

Leadership and management

If you wish to study Economics at University A Level Maths will also be required for most Universities.

## Additional Information.

For any further questions, please contact Mr Opalka.

[ropalka@blandfordschool.org.uk](mailto:ropalka@blandfordschool.org.uk)



# **A Level English Language & Literature (This is a joint course)**

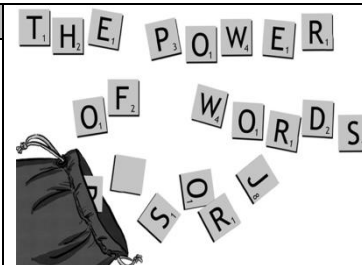
<b>Subject Leader</b>	Mr D Tovey	<b>Exam board</b>	AQA	<b>Specification Link</b>	<a href="http://www.aqa.org.uk/subjects/english/as-and-a-level/english-language-and-literature-7706-7707">http://www.aqa.org.uk/subjects/english/as-and-a-level/english-language-and-literature-7706-7707</a>
-----------------------	------------	-------------------	-----	---------------------------	---

## **Entry Requirements.**

Grade 5 in GCSE English Language and English Literature.

## **Why choose A Level English.**

As well as being interesting in its own right, English Language and Literature as a subject is widely accepted as an excellent qualification for going on to a variety of further education courses or straight into employment. The variety of assessment styles used, such as re-creative writing, commentary writing, discursive essays and research-based investigative writing, allow you to develop a wide range of analytical and written skills.



## **What you will study in A Level English.**

- English Language & Literature at A Level is a course which combines the study of language and literature.
- At A Level you will be exploring the idea of *Telling Stories* in a novel, a collection of poetry and an anthology of non-fiction (spoken and written texts with the theme of Paris). You will explore the idea of *Conflict* in a further novel and a Shakespeare play. You will also transform texts into other written genres/forms and produce commentaries on the choices you make as the writer. You will also continue to study a wide range of other texts across a range of written and spoken genres.
- In Year 13 you will also produce a 2500-3000 word investigation of the connections between literary and non-literary texts (for example 'A comparison of openings in a novel and an autobiography' or 'An exploration of speech features in literature and in real-world communication').

## **How you will be assessed in A Level English.**

Paper 1: Telling Stories (40% of A Level, Exam)

Paper 2: Exploring Conflict (40% of A Level, Exam)

Paper 3: Making Connections Investigation (20% of A Level)  
Non-examined assessment (coursework)



## **Progression and Careers linked to English.**

Law, Management, The Media, Teaching, Publishing, Journalism and Writing, Acting, Administration, etc. In fact, any career!

## **Additional Information.**

English Language and Literature is your chance to study words and how they are used in a wide variety of contexts ... and words are at the heart of everything we do as human beings!

Not only is it a wonderful course that will make your brain bigger, but it also combines the best of English Language and English Literature courses. It is a great qualification whether you want to go straight to employment or to college or to university. It will teach you to think analytically, and to organise, assess and support arguments; it will develop your written and spoken communication skills.



## Extended Project Qualification

<b>Subject Leader</b>	Mr J Langford	<b>Exam board</b>	AQA	<b>Specificati on Link</b>	<a href="http://www.aqa.org.uk/subjects/projects/aqa-certificate/EPQ-7993">http://www.aqa.org.uk/subjects/projects/aqa-certificate/EPQ-7993</a>
-----------------------	---------------	-------------------	-----	----------------------------	---

### Entry Requirements

5 GCSEs Grade 5 or above, including GCSE English Language

**You will require very strong independent learning skills to produce a successful Extended Project.**

### Why choose EPQ.

The EPQ is designed to give students the skills needed for independent study and therefore prepare them for higher education or a higher level apprenticeship. The course aims to help students to develop their abilities beyond A level. This course is a way of gaining an AS equivalent qualification in an area that students have selected themselves. It is a good opportunity for students to really stretch themselves and show their capability in a range of disciplines which will prepare them for their progression after they leave school.



### What you will study in the EPQ.

The course aims to help students to develop their abilities beyond A level. Students choose an area of study that is outside their A level subjects, which is of interest to them. They are then taught certain skills such as research, note taking, referencing and working in groups or individually. Students can then choose whether to complete a project which results in them producing an artefact or a reflective essay on their project. EPQ students are expected to be able to motivate themselves to work independently outside lessons and to learn how to evaluate their project throughout the year by keeping a production log as the year progresses. They will have time on their timetable for the taught content of the course and will be assigned a supervisor who will have 1-2-1 sessions with them to check on their progress and to agree targets with them. At the end of the project, students will be expected to give a presentation to their supervisor and co-ordinator in order to explain and evaluate their project and findings.

### How you will be assessed in the EPQ.

Assessment is by production of an artefact or a 5,000 word essay and a presentation. You will also be required to keep a log of your project which will need submitting with evaluating comments added as to what you changed and how well the project progressed. You will be assessed by your supervisor throughout the course and will have to show evidence of taking their supervisor's points into account throughout the course.

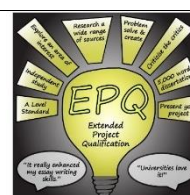


### Progression and Careers linked to the EPQ.

This qualification is worth UCAS points and will be an additional consideration for universities when you apply in year 13. It will also give students relevant skills such as time and project management, research and the ability to write a coherent report which will be useful in apprenticeships or the workplace.

### Additional Information

The EPQ gives you a chance to study something that is important to you and it will also help you to understand what you want to study later on - so give it a go!



# A Level French

<b>Subject Leader</b>	Mrs V Ash / Miss A Munro	<b>Exam board</b>	AQA	<b>Specification Link</b>	<a href="http://www.aqa.org.uk/subjects/languages/as-and-a-level/french-7652">http://www.aqa.org.uk/subjects/languages/as-and-a-level/french-7652</a>
-----------------------	--------------------------	-------------------	-----	---------------------------	---

## Entry Requirements.

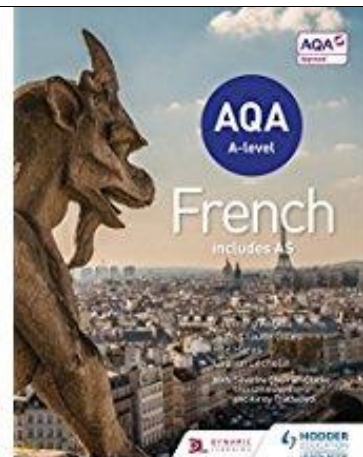
Grade 6 in GCSE French.

## Why choose A Level French.

### Are you interested in:

- Becoming fluent in a second language?
- Working in a multinational company?
- Foreign travel?
- Languages and business?
- Combining a language skill with another expertise?

A level French is a very valuable qualification for a wide range of careers. You can combine French with most other subjects at university. As well as jobs for specialist linguists, there is great demand for French speaking engineers, scientists, business people, marketing specialists and, of course, people to work in the leisure and tourism sector.



## What you will study in A Level French.

Modern French in a variety of situations

The society and culture of the French speaking world today.

### Topics

Year one – Social Issues and trends: aspects of French-speaking society. A French film.

Year two – Current issues: diversity, poverty, and criminality. A French novel

## How you will be assessed in A Level French.

Paper 1: Listening, Reading & Translation 40 %

Paper 2: Writing (2 x essays) 30%

Paper 3: Speaking 30%

« Avoir une autre langue, c'est posséder une deuxième âme » – Charlemagne

“Having another language is like having a second soul”

## Progression and Careers linked to French.

Translating and interpreting, The holiday and travel industry, politics, charities and pressure groups, sales and marketing, any international field.

## Additional Information.

We hope your studies will include a visit to a French speaking country. We also hope there will be an opportunity to take part in a study trip or work experience visit abroad during the two year course.



# A Level Geography

<b>Subject Leader</b>	Mrs H Muir	<b>Exam board</b>	Edexcel	<b>Specification Link</b>	<a href="http://qualifications.pearson.com/en/qualifications/edexcel-a-levels/geography-2016.html">http://qualifications.pearson.com/en/qualifications/edexcel-a-levels/geography-2016.html</a>
-----------------------	------------	-------------------	---------	---------------------------	---

## **Entry Requirements**

Grade 5 in GCSE Geography.

## **Why choose A Level Geography.**

Geography is visible in everything we do, constantly changing and adapting to differing scenarios. In an ever-growing world, the study of Geography is not only highly relevant, but essential if we are going to learn to live with changes over time. By studying Geography, students are exposed to a world of challenges, opportunities, and consequences to which they have the potential to make a big impact on now and in the future. Geography bridges the arts and sciences and has many cross curricular links and will sit well with almost any other subject to provide a holistic level 3 education. Not only is Geography a fascinating, eye opening and relevant subject, it provides students with a wealth of transferable skills that are in high demand to potential higher education establishments and employers alike. Regardless of whether you intend to follow a geographical career path or something else, Geography opens doors and gives you essential skills for future progression.

“Geography is a living, breathing subject, constantly adapting itself to change. It is dynamic and relevant. For me Geography is a great adventure with a purpose.”  
Michael Palin, 2011.

## **What you will study in A Level Geography.**

### **Area of study 1: Dynamic Landscapes**

- Topic 1 – Tectonic Processes and Hazards
- Topic 2 – Landscape systems, process and change (*coastal landscapes and change*)

### **Area of study 2: Dynamic Places**

- Topic 3 - Globalisation
- Topic 4 – Shaping places (*regenerating places*)

### **Area of study 3: Physical Systems and Sustainability**

- Topic 5 – The water cycle and water insecurity
- Topic 6 – The carbon cycle and energy security

### **Area of study 4: Human Systems and Geopolitics**

- Topic 7 - Superpowers
- Topic 8 – Migration, identity and sovereignty.

### **Fieldwork:**

Student will be required to complete 4 days of compulsory fieldwork\* during the two year course. The fieldwork will be closely linked to both their human and physical geography studies. The skills learnt here will enable students to develop their own independent investigations, which provides the coursework element of the A Level and 20% of the overall grade. In addition, there is the opportunity to take part in an international fieldtrip to Iceland which takes students on a memorable tour of The Golden Circle and the chance to experience living Geography.

### **Independent investigation**

Following successful completion of fieldwork, students will be required to complete an independent investigation using the skills learnt. The question/issue to be investigated will be identified by the student and will be linked to one of the topics previously studied. Students must independently collect fieldwork data and secondary research to enable them to answer their pre-identified question.

### How you will be assessed in A Level Geography.

The A level course is composed of 4 distinct areas of study (human and physical geography, as well as a synoptic section based on geographical issues and a coursework element (the independent investigation)) into which fieldwork and geographical skills will be incorporated.

Paper 1 (physical)	30%	Exam comprising of questions on topics 1, 2, 5 and 6.
Paper 2 (human)	30%	Exam comprising of questions on topics 3, 4, 7 and 8.
Paper 3 (synoptic paper)	20%	Exam comprising of an assessment on a pre-seen booklet of information linking to all parts of the course.
Independent Investigation	20%	Coursework



### Progression and Careers linked to Geography.

As well as being a fascinating, dynamic and highly visible subject in day-to-day life, Geography is a brilliant step towards a wide range of higher education courses and/or employment opportunities. It is particularly useful for careers in environmental areas, human rights and international development, recreation and leisure, planning and management, the armed forces and emergency services amongst others. Students will develop a wide variety of transferable skills useful to future employers such as communication, the analysis and presentation of data, problem solving and environmental awareness.

\* There is a charge for field work. Students eligible for the 16-19 Bursary will have this charge paid for them.

## CTEC Health & Social Care – Single award (Extended Certificate)

<b>Subject Leader</b>	Ms T Carter	<b>Exam board</b>	OCR	<b>Specification Link</b>	<a href="http://www.ocr.org.uk/qualifications/vocational-education-and-skills/cambridge-technical-health-and-social-care-level-3-certificate-extended-certificate-foundation-diploma-diploma-05830-05833-2016-suite/">http://www.ocr.org.uk/qualifications/vocational-education-and-skills/cambridge-technical-health-and-social-care-level-3-certificate-extended-certificate-foundation-diploma-diploma-05830-05833-2016-suite/</a>
-----------------------	-------------	-------------------	-----	---------------------------	---

<b>Why choose the Level 3 Extended Certificate in HSC</b>	<p>You will have the opportunity to:</p> <ul style="list-style-type: none"> <li>• Develop professional and personal skills through interactions with different people who work in the HSC sector.</li> <li>• Consider the real impact on people living with conditions or illnesses, such as the social, financial and psychological impact.</li> <li>• Learn about the legislation and guidance available to support and protect people from abuse or harm.</li> <li>• Focus on the skills, knowledge and understanding required for further study or work in Health &amp; Social Care.</li> <li>• Build positive relationships and enhance your communication skills with a diverse range of people.</li> </ul>	
---	---	--

<b>What you will study in the Level 3 Extended Certificate .....</b>	<ul style="list-style-type: none"> <li>• Building Positive Relationships</li> <li>• Equality, Diversity and Rights</li> <li>• Health, Safety and Security</li> <li>• Anatomy and Physiology</li> <li>• Nutrition for Health</li> <li>• Promoting Health and Well Being</li> </ul>
--	---

<b>How you will be assessed in Level 3 Extended Certificate</b>	<p>Three of your units will be externally assessed with exams in January and June. Three units will be internally assessed with three pieces of coursework.</p>	<p><i>“Cambridge Technicals will allow students to achieve their potential and progress to the next stage of their lives, whether it be Higher Education, an apprenticeship or employment” (OCR)</i></p>
---	---	--

<b>Progression and Careers linked to Health and Social Care</b>	<p>Cambridge Technicals provide a strong base for progression to university, apprenticeship or work and are recognised for UCAS tariff points.</p> <p>Many of our students have progressed into careers such as nursing, teaching, midwifery, early years, art therapy, social work, health visiting and other related professions.</p>
---	---

<b>Additional Information</b>	<p>Student comments:</p> <p><i>“Health and social care enabled me to find out about some career paths that I never knew existed”</i></p> <p><i>“Studying health and social care was great because it developed my confidence and communication skills and I also liked the balance between exams and coursework”</i></p>	
-------------------------------	--	--

## CTEC Health & Social Care – Double Award (Diploma)

<b>Subject Leader</b>	Ms T Carter	<b>Exam board</b>	OCR	<b>Specification Link</b>	<a href="http://www.ocr.org.uk/qualifications/vocational-education-and-skills/cambridge-technical-health-and-social-care-level-3-certificate-extended-certificate-foundation-diploma-diploma-05830-05833-2016-suite/">http://www.ocr.org.uk/qualifications/vocational-education-and-skills/cambridge-technical-health-and-social-care-level-3-certificate-extended-certificate-foundation-diploma-diploma-05830-05833-2016-suite/</a>
-----------------------	-------------	-------------------	-----	---------------------------	---

### Why choose the Level 3 Diploma in HSC

You must choose this course in addition to the Extended certificate in HSC (single award). The Diploma is worth the same UCAS points as two A levels.

This course is the ideal choice for any student wishing to pursue a health, medical-related, education or social care vocational university degree, apprenticeship or employment. As a vocational course it prepares students effectively for all these roles. The course has been developed to meet the changing needs of the sector and prepares students for the challenges they'll face in Higher Education or employment. Designed in collaboration with experts spanning the breadth of the sector, the Diploma focuses on the skills, knowledge and understanding that today's universities and employers demand. Students will practically apply their skills and knowledge in preparation for further study or the workplace.



### What you will study in the Level 3 Diploma in HSC

In addition to the units studied for the Extended Certificate you will study:

- Infection Control
- Personalisation and a Person-Centred Approach to Care
- Safeguarding
- Promoting positive behaviour or the impact of long-term physiological conditions

Students will also complete a selection of these optional units:

- |  |  |
|--|--|
| <ul style="list-style-type: none"> <li>• Creativity and Activity for Children and Young People</li> <li>• Supporting People with Learning Disabilities</li> <li>• Career Planning for Health and Social Care</li> <li>• Sexual Health, Reproduction and Early Development Stages</li> <li>• Supporting People with Dementia</li> <li>• Supporting People with Mental Health Conditions</li> <li>• Caring for Older People</li> </ul> | <ul style="list-style-type: none"> <li>• Creativity and Activity for Adults</li> <li>• Principles of Youth Work Practice</li> <li>• Looked after Children and Young People</li> <li>• Psychology for Health and Social Care</li> <li>• Sociology for Health and Social</li> <li>• Public Health</li> </ul> |
|--|--|

### How you will be assessed in Level 3 Diploma in HSC

Five of your units will be externally assessed with exams in January and June. All other units will be internally assessed coursework units. The choice of the optional units will be decided upon based on the needs and interests of the students in the group.

*Universities and Employers have developed this course with the exam board to ensure it meets the needs of the Health and Social Care sector. As a result it is a course that has clear links to a range of future careers in a growing industry.*

### Progression and Careers linked to Health and Social Care

This vocational course links directly to a vast range of progression paths and careers. Students have progressed into careers such as nursing, teaching, midwifery, occupational therapy, early years, art therapy, social work, health visiting, radiography, ophthalmology, dietician and other related professions.

### Additional Information

<https://www.ucas.com/further-education/post-16-qualifications/qualifications-you-can-take/cambridge-technical>



## A Level History

<b>Subject Leader</b>	Mrs K Traynor	<b>Exam board</b>	Edexcel	<b>Specification Link</b>	<a href="https://qualifications.pearson.com/content/dam/pdf/GCSE/History/2016/specification-and-sample-assessments/9781446925867_GCSE2016_L12_History_Web.pdf">https://qualifications.pearson.com/content/dam/pdf/GCSE/History/2016/specification-and-sample-assessments/9781446925867_GCSE2016_L12_History_Web.pdf</a>
-----------------------	---------------	-------------------	---------	---------------------------	---

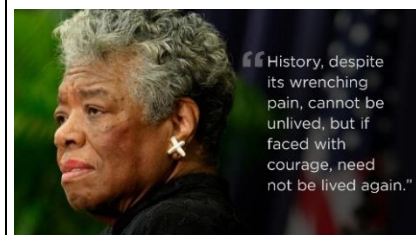
### Entry Requirements.

Grade 5 in GCSE History and a Grade 5 in English GCSE.

### Why choose A Level History.

History isn't a subject that's stuck in the past. Far from it. Historical events are what have shaped society worldwide into what it is today.

As well as being interesting in its own right, History is a subject which is widely accepted as a good qualification for going on to a variety of further education courses or straight into employment. It is particularly useful for courses in the fields of law and public administration. A detailed knowledge of History will also help you to have a better understanding of current political, economic and social developments.



### What you will study in A Level History.

You will look at a mixture of British and European history as well as some American history in Year 13. Some of the work will involve in-depth studies, looking at a relatively short period of time, whilst other units look at issues and change over more than a hundred years. You will study political, social, economic and military history.

Major topics on the course include:

- ❖ Why did England descend into civil war in the seventeenth century?
- ❖ How revolutionary was the Glorious Revolution of 1688?
- ❖ Why was Tsarist power overthrown in Russia in 1917?
- ❖ Why were Lenin and the Bolsheviks able to take power?
- ❖ How did African-Americans win the struggle for Civil Rights?
- ❖ How have Civil Rights issues been presented in fiction and film?

### How you will be assessed in A Level History.

Unit 1	Two essays and one interpretation based question on Britain 1625-1700	30%	Exam
Unit 2	One essay and one source based question on Russia 1894-1924	20%	Exam
Unit 3	Two essays and one source based question on Civil Rights and Race Relations in the USA 1850-2009	30%	Exam
Unit 4	Coursework on the significance of Martin Luther King.	20%	Coursework



### Progression and Careers linked to History.

Your A Level in History gives you knowledge and skills which can go on to become historical researchers, work in heritage organisations or become teachers. But History also supports other career paths, like business, journalism, politics, law, social work and public services.

### Additional Information.

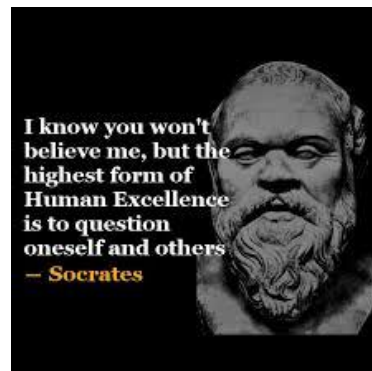
#### Example assessment materials:

<http://qualifications.pearson.com/en/qualifications/edexcel-a-levels/history-2015.coursematerials.html#filterQuery=category:Pearson-UK:Category%2FSpecification-and-sample-assessments>

#### Revision materials

- My Revision Notes Edexcel AS/A Level History: Britain, 1625-1701: Conflict, revolution and Settlement.
- My Revision Notes Edexcel AS/A Level History: Russia in Revolution, 1894-1924.
- My Revision Notes Edexcel A Level History: Civil Rights and Race Relations in the USA 1850-2009.

You will be expected to purchase the course textbook, Bursary students will have this funded for them.



## A-level Mathematics

<b>Subject Leader</b>	Mrs M Lee	<b>Exam board</b>	AQA	<b>Specification Link</b>	<a href="http://www.aqa.org.uk/subjects/mathematics/as-and-a-level/mathematics-7357">http://www.aqa.org.uk/subjects/mathematics/as-and-a-level/mathematics-7357</a>
-----------------------	-----------	-------------------	-----	---------------------------	---

### Entry Requirements.

Grade 7 in GCSE mathematics. All students are advised to speak to Mrs Lee about the demands of this course and their suitability for study.

### Why choose A Level Mathematics.

**Career Opportunities:** Mathematics is a versatile qualification, well-respected by employers and a facilitating subject for entry to higher education. Careers for men and women with good mathematics skills and qualifications are not only well paid, but they are also often interesting and rewarding.

**Employability Skills:** The reason why so many employers highly value mathematics qualifications is that these students become better at thinking logically and analytically. The writing of structured solutions, proof and justification of results help you to formulate reasoned arguments

**Preparation for Higher Education:** For progression to many courses at university it is important to have strong mathematics skills. For most science, technology, engineering and mathematics (STEM) degree courses A-Level Mathematics is a requirement.

**Supporting Other Subjects:** The mathematical skills you learn in A Level Mathematics are of great benefit in other A Level subjects such as Physics, Chemistry, Biology, Geography, Psychology, Economics and Business Studies.

**An Interesting Course:** A Level Mathematics is an interesting and challenging course which extends the methods you learned at GCSE and includes optional applications of mathematics, such as Statistics and Mechanics. Many subjects make use of statistical information and techniques. An understanding of probability and risk is important in careers like insurance, medicine, engineering and the sciences. Mechanics is particularly useful to students studying physics and engineering.

### What you will study in A-Level Mathematics.

There are three strands to the Maths A-Level qualification:

**Pure (Core):**

- Proof
- Algebra and functions
- Coordinate geometry
- Sequences and series
- Trigonometry
- Exponentials and logarithms
- Differentiation
- Integration
- Numerical methods
- Vectors

**Statistics:**

- Statistical sampling
- Data presentation and interpretation
- Probability
- Statistical distributions
- Statistical hypothesis testing

**Mechanics:**

- Quantities and units in mechanics
- Kinematics
- Forces and Newton's laws
- Moments

### How you will be assessed in A-Level Mathematics.

Three 2-hour exams will be sat at the end of Y13.

### Progression and Careers linked to A- Level Mathematics.

**"Maths is good for pretty much any career and gives you bags of skills"**. A spokesperson for the Institute of **Mathematics** and its Applications says: "A-level **maths** is tremendously important. It provides a firm foundation for all scientific, technical, engineering and mathematical careers and a flying start for many other types of career, such as those in finance, medicine, agriculture ... etc. The list is endless!"

### Additional Information:

For additional information please come and speak to Mrs Lee.

# A Level Philosophy

<b>Subject Leader</b>	Mr S Harrow	<b>Exam board</b>	AQA	<b>Specification Link</b>	<a href="http://www.aqa.org.uk/subjects/philosophy/as-and-a-level">http://www.aqa.org.uk/subjects/philosophy/as-and-a-level</a>
-----------------------	-------------	-------------------	-----	---------------------------	---

## Entry Requirements.

Grade 5 GCSE RE or GCSE English

## Why choose A Level Philosophy.

Studying Philosophy is an excellent opportunity to think deeply whilst developing important transferrable skills. Choosing Philosophy as your subject will prepare you for the kind of careful thinking, critical analysis and persuasive writing that is critical in many different areas of work.

A more important reason to study Philosophy is that *you'll love it*.

Philosophy poses some of the most challenging questions that have ever been asked, underlying many of the most important questions confronting us today.



## What you will study in A Level Philosophy.

The course is divided into 4 units studied across the 2 years:

### 1 Epistemology

What is knowledge? What distinguishes knowledge from mere opinion or belief?

### 2 Moral Philosophy

What is the nature of the good? How should we behave? Applying ethical theories to dilemmas including telling lies and simulated killing

### 3 Metaphysics of God

This unit examines the question, Does God exist?

### 4 Metaphysics of Mind

What do we mean by the mind? Does the 'mind' exist?

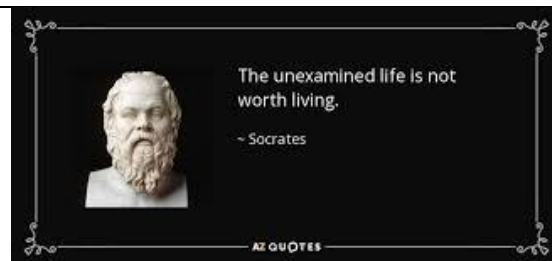
## How you will be assessed in A Level Philosophy.

2 x 3 hour written exams

### **Exam 1 - Epistemology and Moral Philosophy**

### **Exam 2 - Metaphysics of God and Metaphysics of Mind**

There will be 10 questions in each paper, ranging from 3 mark answers which test your knowledge of key words, to 25 marks essay style questions asking you to evaluate a range of the theories you have studied.



## Progression and Careers linked to Philosophy.

It's surprising just how many career paths a Philosophy degree can help with. In a nutshell, doing philosophy can make a significant contribution to any job that requires you to think well, i.e. clearly and rigorously. Big business – the City firms, the banks, the management consultancies, the chartered accountants – are enthusiastic about people who've done philosophy, because they know how to think clearly. Philosophy students also go into law, politics, and the civil service. Journalism is a logical career path, since you have to be able to write well and present ideas logically and clearly. Advertising is another choice, and of course, last in this very incomplete list, but never least, there's always education! So a degree in Philosophy opens doors, it doesn't close them.

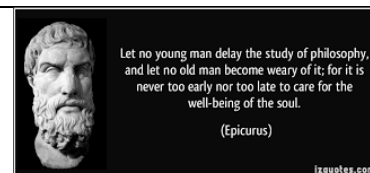
## Additional Information.

Useful sites to help you understand what you will study in Philosophy:

<http://www.philosophyexperiments.com/>

<http://www.philosophers.co.uk/>

<http://www.mindspring.com/~mfpatton/sclinic.htm>



## A-Level Physical Education

<b>Subject Leader</b>	Mr A Young	<b>Exam board</b>	AQA	<b>Specification Link</b>	<a href="http://www.aqa.org.uk/subjects/physical-education/as-and-a-level/physical-education-7582">http://www.aqa.org.uk/subjects/physical-education/as-and-a-level/physical-education-7582</a>
-----------------------	------------	-------------------	-----	---------------------------	---

### Entry Requirements.

Grade 5 in GCSE PE / Level 2 Merit in BTEC Sport

### Why choose A Level Physical Education.

Sport is no longer just about physical performance but is now a science. Are you interested in the impact of sport and its influence on wider society? Are you interested in the human body and how it can be manipulated to perform at great intensities with exceptional accuracy and consistency? Do you ever wonder how an elite performer can play well one week and poorly the next? A-level Physical Education has all the answers to these questions and more. Sport is the fastest growing and most lucrative industry in the world and shows no sign of slowing down.



### What you will study in A Level Physical Education.

- Applied anatomy and physiology
- Skill acquisition
- Sport and society
- Exercise physiology and biomechanics
- Sport psychology
- Technology in sport

### How you will be assessed in A Level Physical Education.

- 70% of assessment is via theory examinations. Students will sit two papers of 2 hours duration.
- 15% of assessment is through coursework.
- 15% of assessment is through practical performance or coaching in one sport.

*"Champions do not become champions when they win an event, but in the hours, weeks, months and years they spend preparing for it. The victorious performance is merely a demonstration of their championship character"*

Michael Jordan – Basketball legend

### Progression and Careers linked to A Level Physical Education.

University courses & careers in: (To study Sports Science at most Universities you will require a Science of Maths A Level also.

- Sport Science
- Physiotherapy
- Performance Analysis
- Sports Coaching
- Sports Psychology
- Biomechanics
- Teaching
- Personal Training
- Sports Medicine
- Sports Nutrition

### Additional Information.

A-Level Physical Education opens many doors to the future. It compliments many other options and is a fascinating subject to learn. Much of the content is taught through practical application.

For more information, please contact Mr Young, Mr Williams or Mr Clinton.



# A level Physics

<b>Subject Leader</b>	Mr H Hintze	<b>Exam board</b>	AQA	<b>Specification Link</b>	<a href="http://www.aqa.org.uk/subjects/science/as-and-a-level/physics-7407-7408">http://www.aqa.org.uk/subjects/science/as-and-a-level/physics-7407-7408</a>
-----------------------	-------------	-------------------	-----	---------------------------	---

## Entry Requirements.

Grade 7 in GCSE Physics or 7-7 in GCSE combined Science, plus a 6 in GCSE Maths.

## Why choose A Level Physics.

Physics is the study of matter and energy. As the world's resources of cheap fossil fuels decline and the global warming their use has inevitably caused increases, physicists seek cleaner, greener alternatives. It is no exaggeration to say physicists are men and women with a mission, that of maintaining and indeed improving our way of life. Computers, the internet, MRI imaging and PET scans were all invented by physicists in the last century. Physics is at the heart of so many science and engineering disciplines. An A level in physics opens the door to a wide range of scientific and engineering careers, as well as to university courses in these subjects. When you next use your mobile phone or computer, just thank a physicist.



## What you will study in A Level Physics.

- Particles and Radiation
- Waves
- Mechanics and Materials
- Electricity
- Further Mechanics and Thermal Physics
- Gravitational, Electrostatic and Magnetic Fields
- Nuclear Physics
- One option topic from Astrophysics, Medical Physics, Engineering Physics and Turning Points in Physics
- There are twelve compulsory practical experiments in this course

## How you will be assessed in A Level Physics

The A-level course is assessed by three 2-hour papers, which will include multiple choice, short and longer answer questions.

**“Physics has a history of synthesising phenomena into a few theories.”**  
Richard Feynman (physicist)

## Progression and Careers linked to Physics

Many A level Physics students proceed to university where they might study Physics, Chemistry, Engineering, Electronics, Materials Science or Environmental Science. A level Physics is a numerical subject so physics graduates are sought after by companies in the financial sector. The adoption of medical imaging techniques like Ultrasound, CT, MRI and PET scans and the growth of Nuclear Medicine has led to widespread opportunities for physicists in hospitals.

## Additional Information

A level Physics is a tough course which is not for the faint-hearted. Enthusiasm for the subject, a fascination for the way things work and an appetite for intellectual challenge are pre-requisites. Physics is a numerical subject; a scientific calculator is required for this course.

**“Physicists are the Peter Pans of the human race. They never grow up; they keep their curiosity.”**  
I. I. Rabi (inventor of Magnetic Resonance Imaging)

# A Level Psychology

<b>Subject Leader</b>	Mrs V Yeo	<b>Exam board</b>	AQA	<b>Specification Link</b>	<a href="https://www.aqa.org.uk/subjects/psychology/as-and-a-level">https://www.aqa.org.uk/subjects/psychology/as-and-a-level</a>
-----------------------	-----------	-------------------	-----	---------------------------	---

## Entry Requirements.

Grade 5 in GCSE English, Maths and Science.

## Why choose A Level Psychology.

Are you interested in why people behave the way they do? Do you want to know the answers to questions such as how do I think? Or why are some people good leaders? Why does my behaviour change in a crowd? How can we treat mental health issues?

If so then you will probably enjoy Psychology. Psychology is a relatively new science and so you really need to be open minded and the sort of person who can accept that there are no straight forward answers. Psychologists prepare theories and then conduct research to test these ideas. They then use their findings to help people in the real world. It is a practical research based science and so you will conduct research and analyse your findings. The practical skills and understanding of methodology that A level psychology nurtures are really useful in a wide range of career options. You will deepen your understanding about human behaviour which will benefit you in your choice of work and ultimately in your relationships with others.



## What you will study in A Level Psychology.

Psychology is the study of human behaviour.

During the first year course you will study:

- Critical issues around, social influences on behaviour such as obedience and conformity. Cognitive psychology such as how the memory works. You also examine the methodology used in psychological research. Key psychological theories such as the Behaviourist/Learning approach will be examined along with Biological theory. How to understand mental health and treatments for this.

During the second year course you will study:

- Gender development, Aggression and Stress in depth. Issues and key debates within psychology. Your knowledge and understanding of research design will be developed further.

## How you will be assessed in A Level Psychology.

<b>Paper 1</b> Introductory Topics in Psychology	2 hour exam 96 marks worth 33.3%	Memory, Attachment, Social influence, Psychopathology
<b>Paper 2</b> Psychology in Context	2 hour exam 96 marks worth 33.3%	Approaches, Bio-psychology, Research methods
<b>Paper 3</b> Issues and Options in Psychology	2 hour exam 96 marks worth 33.3%	Issues & debates, Gender, Stress, Aggression



### Progression and Careers linked to Psychology.

A vast range of careers await postgraduate psychology students:

- Clinical psychologist
- Research psychologist
- Occupational psychologist
- Sports psychologist
- Educational psychologist
- Probation work
- Children's services
- Human resources
- The police force

A psychology degree is looked on favourably in many more careers because of the extensive research skills it provides. Another Science A Level or Maths will be required by some universities.

### Additional Information.

Psychology is a fascinating subject because human beings are amazing and very interesting to study. Please be aware that psychology is a multidiscipline subject you will need to answer essay questions, short answer questions, scientific knowledge based questions as well as complete data calculations and analysis. You will be expected to apply your knowledge and assess issues from a number of viewpoints. It is a challenging life science.

*"A wonderful fact to reflect upon, that every human creature is constituted to be that profound secret and mystery to every other."*

Charles Dickens, A Tale of Two Cities



# A Level Sociology

<b>Subject Leader</b>	Mrs H Gibb	<b>Exam board</b>	AQA	<b>Specification Link</b>	<a href="https://www.aqa.org.uk/subjects/sociology/as-and-a-level">https://www.aqa.org.uk/subjects/sociology/as-and-a-level</a>
-----------------------	------------	-------------------	-----	---------------------------	---

## Entry Requirements.

Grade 4 in GCSE English and a Humanities subject.

## Why choose A Level Sociology.

Sociology is a really grown-up subject. You will learn a lot about how the society you live in really works. The kind of questions we consider in Sociology are:

Why are some people rich and some people poor? How does culture shape an individual? What is the purpose of education?

Sociology is a subject which combines well with Psychology, Health and Social Care History, Geography, English, Maths, and Business Studies. Students who do best are interested in people, enjoy looking at newspapers and the news, ask questions, like reading, voice their opinions, keep an open mind and are not frightened of graphs, charts and tables.



## What you will study in A Level Sociology.

- Education, topics include: - functions and types of school, class, gender and ethnic issues, differences in achievement and social policy.
- The role of the media and family in society today.
- Research methods topics include questionnaires, observation, interviews and data analysis.
- Looking at the different perspectives in Sociology – Functionalism, Feminism, Marxism, Interactionism and Post Modernism.
- Crime and Deviance topics include patterns of crime in the UK today. Different theories about the causes of crime, and issues relating to social class, gender and ethnicity.

## How you will be assessed in A Level .....

### Paper 1: Education with Methods in Context

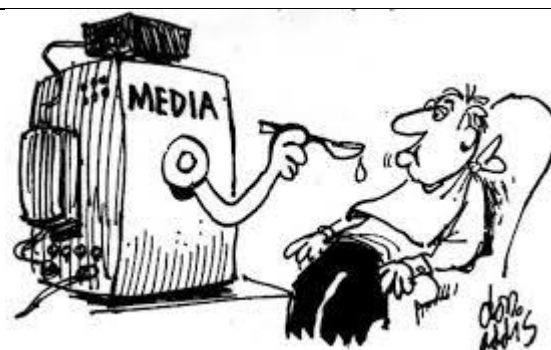
2 hour written exam, 80 marks, 33.3% of A-level

### Paper 2: Topics in Sociology – Media & Family

2 hour written exam, 80 marks, 33.3% of A-level

### Paper 3: Crime and Deviance with Theory and Methods

2 hour written exam, 80 marks, 33.3% of A-level



## Progression and Careers linked to .....

Careers where it could be of benefit include marketing, journalism and the media, law, police, armed services, probation service, social work, nursing and teaching. With the growth of social media there has been a massive increase in the analysis of on-line data. Sociology students are extremely well equipped to analyse such information both numerically and in terms of meaningful assessment. There has never been a better time to be a social scientist.

“When people put their kids to sleep no one tells them bedtime facts.”

Jonah Berger

# A Level Spanish

<b>Subject Leader</b>	Miss A Munro	<b>Exam board</b>	AQA	<b>Specification Link</b>	<a href="http://www.aqa.org.uk/subjects/languages/as-and-a-level/spanish-7692">http://www.aqa.org.uk/subjects/languages/as-and-a-level/spanish-7692</a>
-----------------------	--------------	-------------------	-----	---------------------------	---

## Entry Requirements.

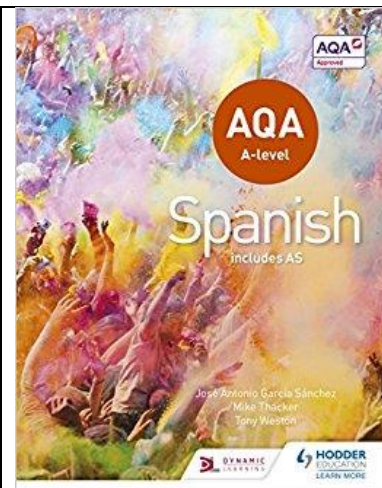
Grade 6 in GCSE Spanish.

## Why choose A Level Spanish.

### Are you interested in:

- Becoming fluent in a second language?
- Working in a multinational company?
- Foreign travel?
- Languages and business?
- Combining a language skill with another expertise?

With almost 400 million speakers, Spanish is the fourth most widely spoken language in the world. Aside from its use in Spain and most of Latin America, it has a major and growing presence in the USA. You can combine Spanish with most other subjects at university. There is a great demand for Spanish speakers in tourism, business, telecommunications, and teaching.



## What you will study in A Level Spanish.

Modern Spanish in a variety of situations  
The society and culture of Spanish speaking countries.

### Topics

Year One – Social Issues and trends: artistic culture in the Spanish speaking world. A Spanish film.  
Year Two – Multiculturalism and aspects of political life in Spanish speaking world. A Spanish novel.

## How you will be assessed in A Level Spanish.

Paper 1: Listening, Reading & Translation 40 %  
Paper 2: Writing (2 x essays) 30%  
Paper 3: Speaking 30%

“ If you talk to a man in a language he understands, that goes to his head. If you talk to him in his own language, that goes to his heart. ”

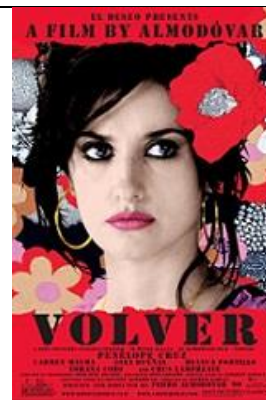
–Nelson Mandela

## Progression and Careers linked to Spanish.

Translating and interpreting, The holiday and travel industry, politics, charities and pressure groups, sales and marketing, any international field.

## Additional Information.

We hope your studies will include a visit to a Spanish speaking country. We also hope there will be an opportunity to take part in a study trip or work experience visit abroad during the two year course.



# Cambridge Technical Ext. Certificate in Sport & Physical Activity (Level 3)

<b>Subject Leader</b>	Mr A Young	<b>Exam board</b>	OCR	<b>Specification Link</b>	<a href="http://www.ocr.org.uk/qualifications/vocational-education-and-skills/cambridge-technical-sport-and-physical-activity-level-3-certificate-extended-certificate-foundation-diploma-diploma-05826-05829-2016-suite/">http://www.ocr.org.uk/qualifications/vocational-education-and-skills/cambridge-technical-sport-and-physical-activity-level-3-certificate-extended-certificate-foundation-diploma-diploma-05826-05829-2016-suite/</a>
-----------------------	------------	-------------------	-----	---------------------------	---

## Entry Requirements.

Grade 4 in GCSE PE / Level 2 Merit in BTEC Sport

## Why choose CTEC Sport.

Sport is no longer just about physical performance but is now a science. Are you interested in the impact of sport and its influence on wider society? Are you interested in the human body and how it can be manipulated to perform at greater intensities with exceptional accuracy and consistency? Would you like to know what makes an effective leader and how to organise events? CTEC Sport has all the answers to these questions and more. Sport is the fastest growing and most lucrative industry in the world and shows no sign of slowing down.



## What you will study in CTEC Sport.

- Anatomy and Physiology
- Sports Coaching & Activity Leadership
- Sports Organisation & Development
- Practical Sports Performance
- Organising Sporting Events

## How you will be assessed in CTEC Sport.

Examinations:

- Anatomy & Physiology (1hr 30mins)
- Sports Organisation & Development (1hr)

Coursework:

- Sports Coaching & Activity Leadership
- Organising Sporting Events
- Practical Skills in Sport & Physical Activity



## Progression and Careers linked to CTEC Sport.

Cambridge Technicals provide a strong base for progression to university courses, apprenticeships or work and are recognised for UCAS tariff points. They can lead to progression in areas such as:

- |                      |                        |
|----------------------|------------------------|
| • Sport Science      | • Personal Training    |
| • Leisure management | • Performance analysis |
| • Sports coaching    | • Teaching             |

## Additional Information.

Cambridge Technical Extended Certificate in Sport & Physical Activity is equivalent to one A-Level.

For more information on the qualification, please contact Mr Young.



## Your Choice – A message from the Headteacher

I hope that you have found this course guide useful in making your decision regarding post 16 options. Further information about the school and Sixth Form can be found on-line at [www.blandfordschool.org.uk](http://www.blandfordschool.org.uk) including the school prospectus.

You can be sure that our highly qualified staff and subject specialists will work extremely hard on your behalf to ensure you achieve the best possible outcomes. Our Sixth Form performance has gone from strength to strength over the years.

In addition, our success record helping students with their chosen progression routes speaks for itself. The comments of past and present students are testament to the hard work and commitment of all staff at the school.

I am particularly proud of our broad and balanced curriculum which leads to such a vast array of destinations including the University of Cambridge, Harper and Keele Veterinary School, University of Exeter, Bath Spa University, University of Plymouth, University of Reading, Laine Theatre Arts, University of Southampton, University of Surrey (Guildford School of Acting – Theatre Management), University of Sussex. Last year we also had students join the Royal Marines, Royal Navy and the Police Force as well as embarking on apprenticeships. Whether it be the arts, sciences, humanities – academic or vocational pathways, we will cater for you!

Should you require any more information about the Sixth Form or specific subjects and choices please do not hesitate to get in touch.

Mrs Sally Wilson

Headteacher



## Notes